

NCI Fellowships and Transition Career Development Awards

*Susan Perkins, PhD, Deputy Branch Chief
Cancer Training Branch, Center for Cancer Training*

Programs

- Individual NRSA Fellowships
 - Predoctoral Fellowships: F30, F31
 - Postdoctoral Fellowship: F32

- Transition Awards
 - K99/R00
 - K22

Requirements at the Time of Award

- US citizenship or permanent residency
 - *Exception: K99/R00*

- Full-time position

- Minimum effort
 - Fellowships (“Fs”) = full-time
 - “K” awards = 9 person-months (75%)

- Cancer-focused research project

Fellowships

F30, F31, F32

Individual Ruth L. Kirschstein National Research Service Awards (NRSA Individual Fellowships)

- **F30** (PA-14-150) – Predoctoral MD/PhD & other Dual-Doctoral Degree Fellows
- **F31** (PA-14-147) – Predoctoral Fellows
- **F32** (PA-14-149) – Postdoctoral Fellows

- Congressionally mandated training program

- Objective: To provide research training support for:
 - Predoctoral trainees enrolled in doctoral degree programs
 - Postdoctoral fellows who have the potential to become productive, independent investigators

NRSA Individual Fellowships

- Fellowship award provides stipend, tuition and fees, and an institutional allowance to help defray training-related expenses (TRE): research supplies, equipment, books, travel to scientific meetings, health insurance
- Postdoctoral fellows incur a payback obligation for 1st year of support
- NCI-specific requirement: Sponsor must have cancer-related R01 or R01-like funding

NRSA Individual Fellowships

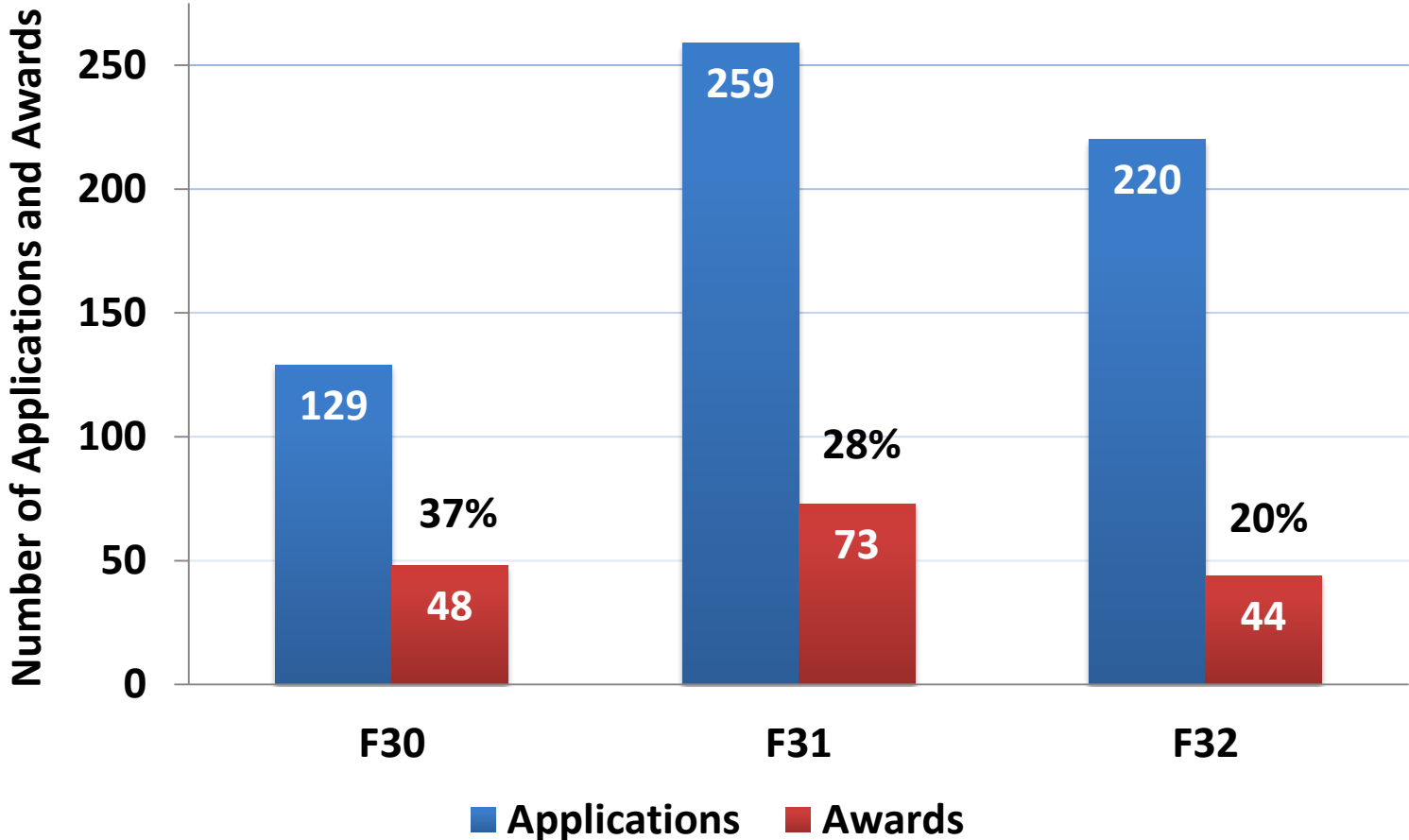
	Dual Degree (F30)	PhD (F31)	Postdoc (F32)
Career Stage	≤ 48 months in program	Enrolled and at dissertation research stage	Postdoctoral & Clinical Fellows
Stipend	\$22,920/year	\$22,920/year	\$42,840 – \$56,376/year
Tuition/Fees	60%, up to \$21,000/year	60%, up to \$16,000/year	60%, up to \$4,500/year or up to \$16,000/year for an additional degree
TRE	Up to \$4,200/year	Up to \$4,200/year	Up to \$7,850/year
Duration	Up to 6 years	Up to 5 years	Up to 3 years

NCI Individual Fellowships

- Predoctoral Fellowships (F30, F31)
 - Initial submission is commonly in the 3rd-4th year (for dual-doctoral degree programs) or the 2nd-3rd year (for PhD programs)
 - Majority (>75%) of awardees have at least 1 publication at the time of submission and 40% have research publications with their sponsor

- Postdoctoral Fellowships (F32)
 - Initial submission is most often within the 1st postdoctoral year
 - Majority (>90%) of awardees have at least 1 first-author publication (and many successful applicants have 4 or more first-author publications)

NCI Fellowship Applications, Awards, and Success Rates, FY2015



(Postdoc) Transition Awards

K99/R00; K22

K99/R00 – Pathway to Independence Award

PA-15-083

- Objective: To help outstanding postdoctoral researchers complete needed mentored training and transition in a timely manner to independent tenure-track assistant professor positions or equivalent

- Eligibility
 - No citizenship requirement
 - No more than 4 years of postdoctoral research training
 - Cannot have held NIH K awards, NIH research grants, or peer-reviewed non-NIH research grants over \$100,000 direct costs per year
 - Cannot have held an independent research faculty position or equivalent
 - Cannot have applied for independent R01, or equivalent, research funding as the PI

K99/R00 – Pathway to Independence Award

- Mentored Phase (**K99**) (1-2 years)
 - Supports mentored research training and career development
 - Allowable costs: Salary up to \$100K/year, research support \$30K/year



Tenure-track Assistant Professor Position (or Equivalent)

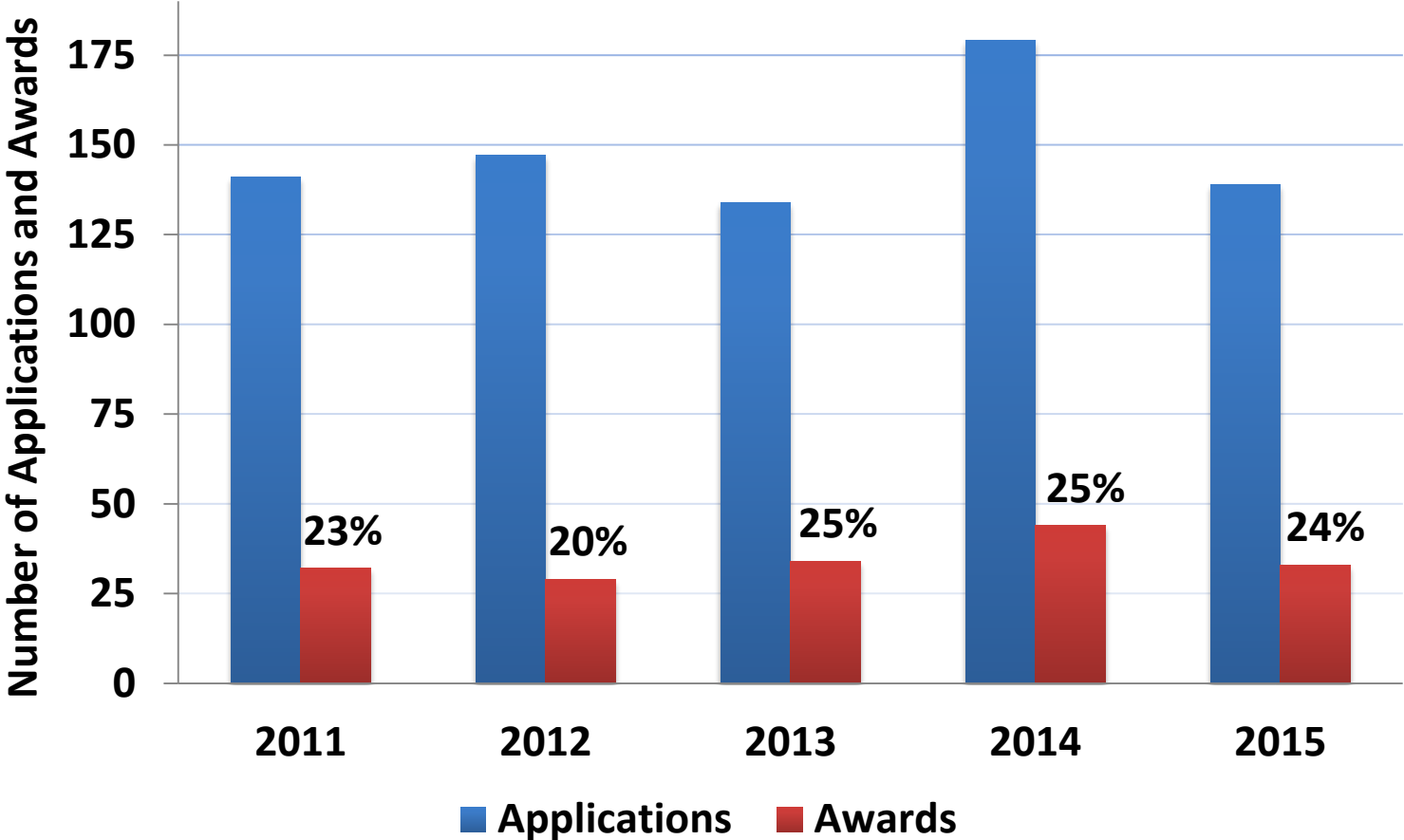


- Independent Scientist Phase (**R00**) (up to 3 years)
 - Supports independent research project
 - Allowable costs: \$249K/year in total costs towards salary, fringe benefits, and research support

NCI K99/R00

- Majority (>90%) are PhDs, with the remainder MD/PhDs
- Publications: 7-15+, with many as first author, published in high-impact journals
- Submit in 2nd-3rd year of postdoc
- Must justify the need for additional mentored career development to become an independent researcher

NCI K99 Applications, Awards, and Success Rates



K22 – NCI Transition Career Development Award

PAR-15-056

- Objective: To support non-independent investigators in transitioning to their first independent tenure-track positions

- Eligibility
 - US citizenship or permanent residency required
 - At least 2 but no more than 8 years of postdoctoral research training
 - Cannot have held NIH K awards, NIH research grants (except R03), or peer-reviewed non-NIH research grants over \$100,000 direct costs per year
 - Cannot already have or have had a tenure-track faculty position or its equivalent

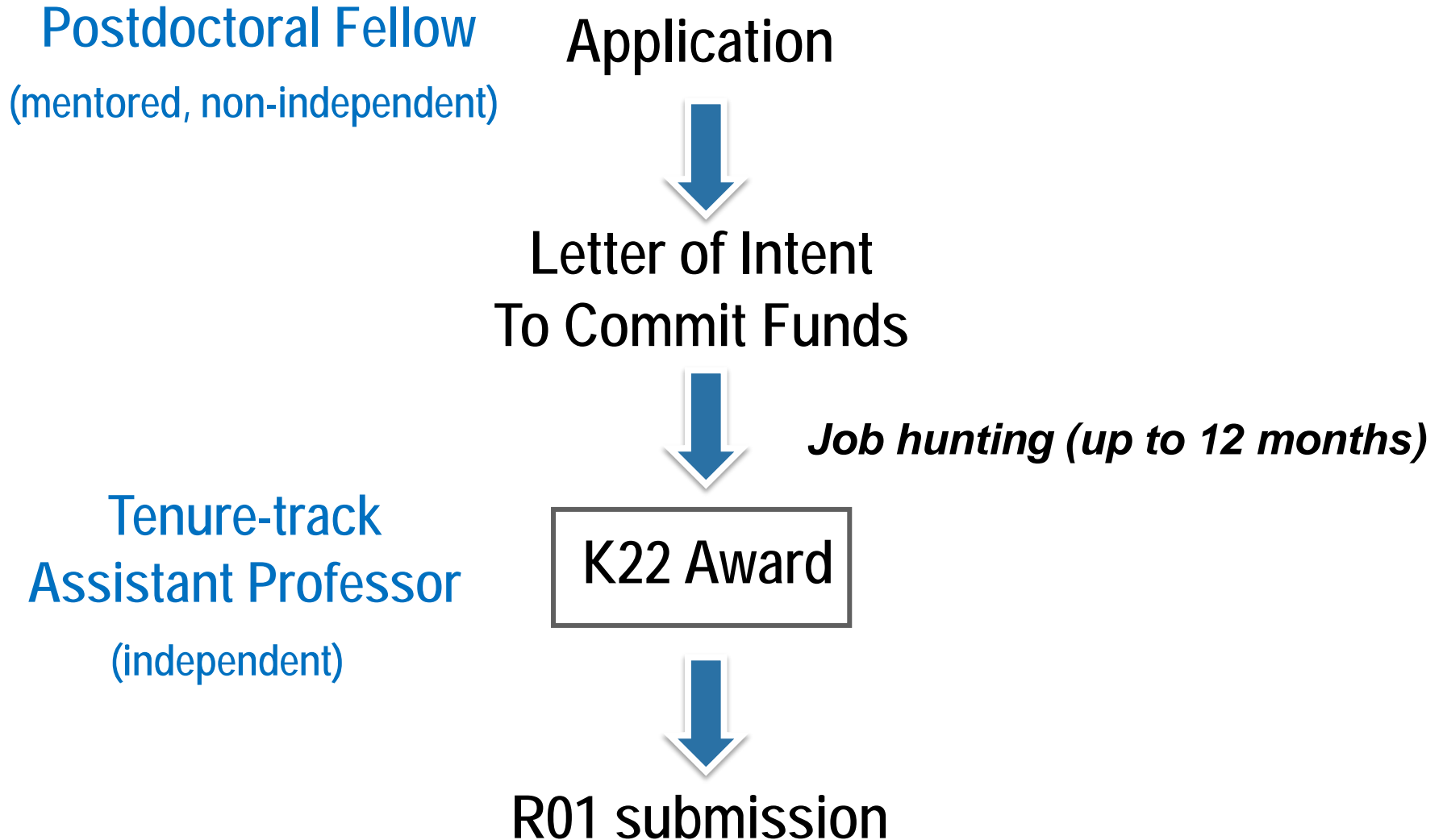
K22 – NCI Transition Career Development Award

PAR-15-056

- Allowable costs:
 - Salary up to \$100K/year, supplies \$50K/year, up to 3 years

- Requirements
 - Secure a tenure-track assistant professor position within 12 months
 - Submit an R01 (or equivalent) application prior to the end of the 2nd year of support

K22 – NCI Transition Career Development Award



NCI K22

- Majority (>80%) are PhDs, with remainder MD/PhDs
- Publications: majority (>80%) have 10+
- Majority are postdocs, but ~30% have other non-independent job titles (instructor, research associate, clinical faculty, etc.)
- 100-110 applications/year; 12-17 awards/year

What do reviewers look for?

■ Review criteria for Fellowships

- Fellowship Applicant
- Sponsor, Consultants, Collaborators
- Research Training Plan
- Training Potential
- Institutional Environment & Commitment to Training

■ Review criteria for K Awards

- Candidate
- Career Development Plan/Career Goals and Objectives
- Research Plan
- Mentor(s), Co-mentor(s), Consultant(s), Collaborator(s)
- Environment & Institutional Commitment to the Candidate

F32, K99/R00, or K22?

- Considerations
 - Citizenship status
 - Years of postdoctoral research experience
 - Funding history
 - Career stage, career trajectory
 - Need for additional mentoring and research training

- Contact CTB program directors for advice

CTB Program Contacts, www.cancer.gov/CCT

- **F30**

Mark Damico, PhD

- **F31**

Jeannette Korczak, PhD

Michele McGuirl, PhD

Michael Schmidt, PhD

- **F32**

Sonia Jakowlew, PhD

Michele McGuirl, PhD

- **K99/R00**

Michael Schmidt, PhD

- **K22**

Sonia Jakowlew, PhD



**NATIONAL
CANCER
INSTITUTE**

www.cancer.gov

www.cancer.gov/espanol