

CABTRAC 2023

Cancer Research Training and Education Coordination (CRTEC)

Challenges and Solutions

Kerry L. Burnstein, PhD
Associate Director for Education and Training
Sylvester Comprehensive Cancer Center
University of Miami



REDCap Database for Trainee Tracking

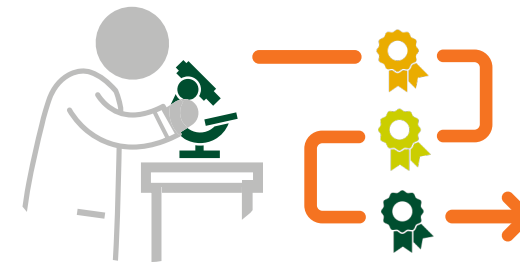
Metrics Captured (>4,000 current and former trainees)



- Trainee type (HS, undergrad, grad, med, residents/fellow, post-docs, scientists*)
- Gender, race/ethnicity, citizenship status
- Disability/disadvantaged background
- Graduate program
- Date range of mentorship
- Research topic
- Fellowships / funding during training
- Awards / prizes during training
- Outcomes (current position after training) – **17 categories**
- Grant(s) / major award(s)

Outcomes Categories

- Academic – Administrative
- Academic – Postdoctoral
- Academic – Research
- Academic – Teaching
- Graduate Student
- Government
- Industry – Postdoctoral
- Industry – Research
- Industry – Non-Research
- Medicine – Academic
- Medicine – Private
- Medicine – Resident
- Medicine – Student
- Other – Science-Related
- Other – Non-Science Related
- Unemployed
- Unknown



How do we update our records?

- Graduate program, residency and research program coordinators
- Sylvester faculty mentors
- HR employee lists
- Canelink system (students only)
- Internal resources e.g., residents match results, student enrollment reports, and alumni reports, travel award applications
- Contact trainees directly
- Google/LinkedIn
- NIH Reporter

Challenges

- Time consuming (50% full time position)
- Manual
- No or inaccurate reporting by current and former faculty
- Leveraging RedCap capabilities

Institutional Roadblocks to Data Collection

- ❑ UM Workday system poor capturing mentor info (postdocs/scientists/researchers)
- ❑ Student Canelink system does not capture mentors.
- ❑ Disadvantaged background or disability not captured
- ❑ Resident and Fellowship data not owned by UM.
- ❑ Trainees with no officially assigned mentor
- ❑ Mentoring history not part of Sylvester membership application

Data Desired but Difficult to Get and/or Unreasonable to Expect

- Former trainees' extramural (non-NIH) funding / awards
- Economically disadvantaged/disability information
- Expanded gender categories
- Minors (partnering organizations)



Data Use and Evaluation (Cancer Center, UM, State of FL) (part 1)

- ❑ Institutional training and career development award *applications* (T32, R25, K12, ACS)
- ❑ Institutional training and career development award *management* (T32, R25, K12, ACS)
- ❑ Graduate program activities (teaching/ mentoring), Summer program mentor participation, T32 postdoc participation and K12 participation for all faculty

Data Use and Evaluation (Cancer Center, UM, State of FL) (part 2)

- Trends in outcomes (e.g. grad students in industry)
- Demographic trends
- Internal dashboards (e.g. Sylvester Space Utilization Committee, Faculty Productivity Reports)
- Research Program “Report Cards”
- IRB approval to access for research purposes

Sylvester Office of Education & Training Team



Sarah Sandiford, MS
Director, Research Support



Vaughn Edelson, MPA, MPH
Sr. Project Manager, Faculty
Development



Adelina Garkova, MPA
Sr. Manager
T32 Programs



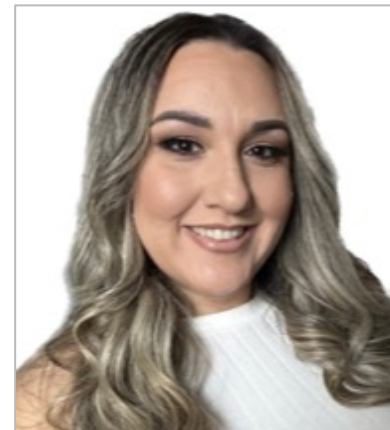
Alexander Lupo, MEd, MS
Manager, CAB Program



Nadelyn Harris, MS
Manager, Summer Programs



Rositsa Kalinova
Manager, Programs
RedCAP!!



Jaimie Williamson
Sr. Administrative Assistant