

Building a Collaborative Environment: Administrators Networking Mixer

Olga Katsovskiy, MHA

Program Manager, Department of Neurology, Cancer Neuroscience

CABTRAC

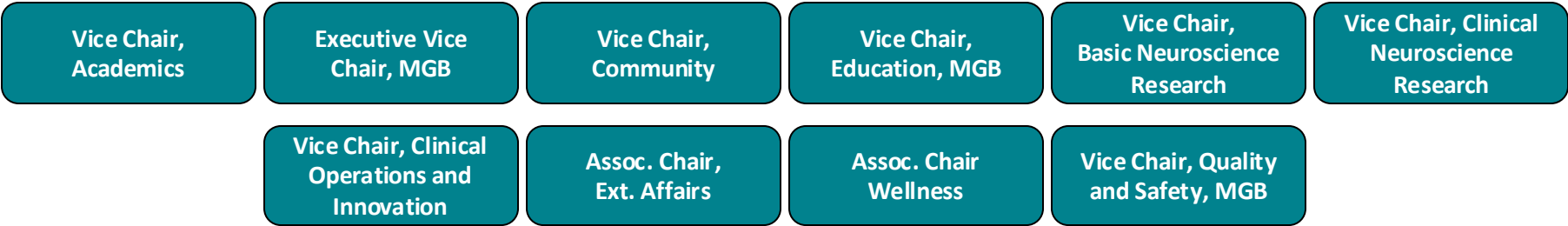
Monday, October 27, 2025

1:30 – 2:35PM

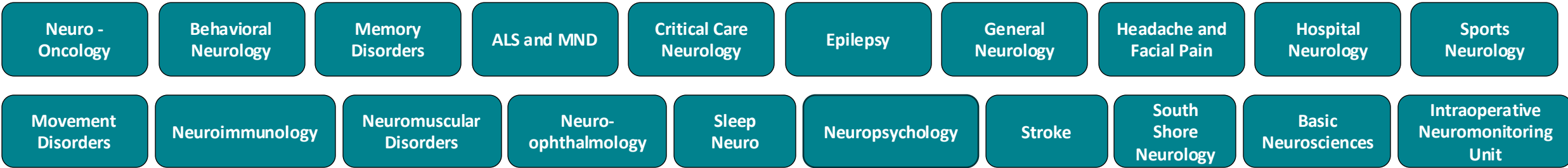
Department of Neurology Leadership Structure

Tracy Batchelor, MD
DON, Chair

CABINET



DIVISIONS

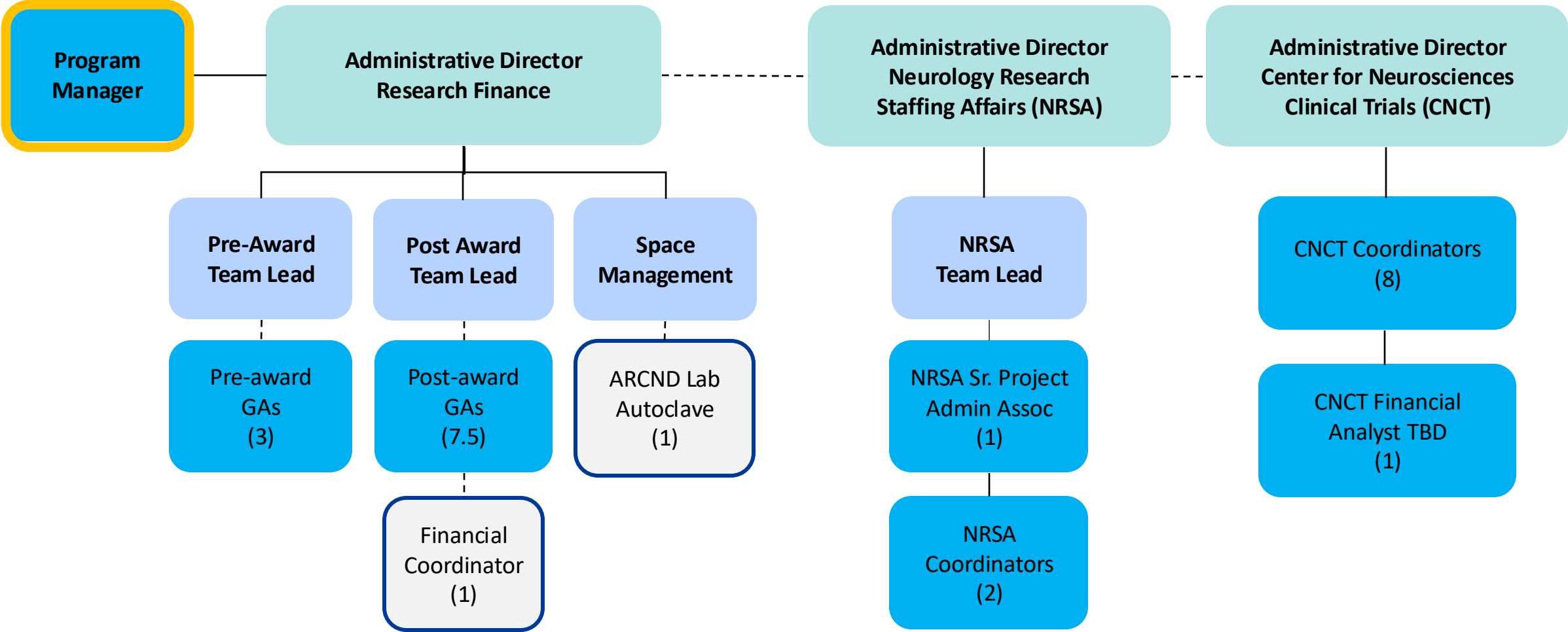


MEDICAL DIRECTORS

Inpatient Operations



Department of Neurology Central Research Administration



Department of Neurology Central Research Administration

Post Award Staff Volume CY2024

9 Grant Managers

692 Total Accounts

127 DHHS Accounts

Pre-Award Staff Volume

222 Applications

Staffing Affairs Volume

444 Employees



MGB Neurology

Clinical Fellowship Programs

25+ Clinical Fellowships

60+ Clinical Fellows

65+ Residents

70 HMS Students

Neurology Research Personnel

455 Research Faculty

271 Research Fellows

1,220 Research Personnel

494 Research Support Staff



MGB Neuroscience Institute – Snapshot of Strengths CY2024

544 Faculty Members

2,180 Staff Members

87 Endowed Positions

20+ Service Locations

9,000 Inpatient Discharges

190,000 Outpatient Visits

400+ Clinical Trials

2,000+ Publications

91 Fellows

105 Residents

36 Fellowships

\$439M Research Revenue



Neuro-Oncology Continuing Education Course



HARVARD MEDICAL SCHOOL

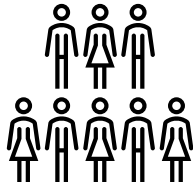
6th Annual Update in Neuro-Oncology

Course Dates: July 22-24, 2026
Course Format: Virtual

Annual 3-day CME course designed to provide a comprehensive review of the diagnosis and management of pediatric and adult patients with primary and metastatic central nervous system (CNS) and peripheral nervous system (PNS) tumors, specific neurogenetic syndromes, and neurological complications of cancer.



5th Annual Update in Neuro-Oncology Learners Summary



93

Registered Learners

65

Physicians
(27 Residents /Fellows)

5

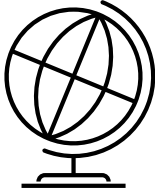
Nurses/NPs

12

Students

8

Allied Health Professionals



26

Countries Represented

45

Learners from the USA

16

States Represented

48

from Rest of the World

30

HMS Faculty



14

Specialties Represented

24

Neurology

27

Oncology & Hematology

1

Radiology & Nuclear Medicine

2

Physical Medicine & Rehabilitation



6

Neurosurgery

2

Pathology

4

Pediatrics

1

Cardiology & Vascular Medicine

26

Other





The Ohio State University Comprehensive Cancer Center - James Cancer Hospital and Solove Research Institute (OSUCCC - James)

Kellee Gauthier, MPH
Senior Director, Education, Training and Growth
Administrator CRTEC

The James

The Ohio State University James Comprehensive Cancer Center

(last updated January 2025)

323 Members

18,459 Accruals to
interventional trials

5 Programs

4,595 Publications
703 IF >10

13 Shared Resources

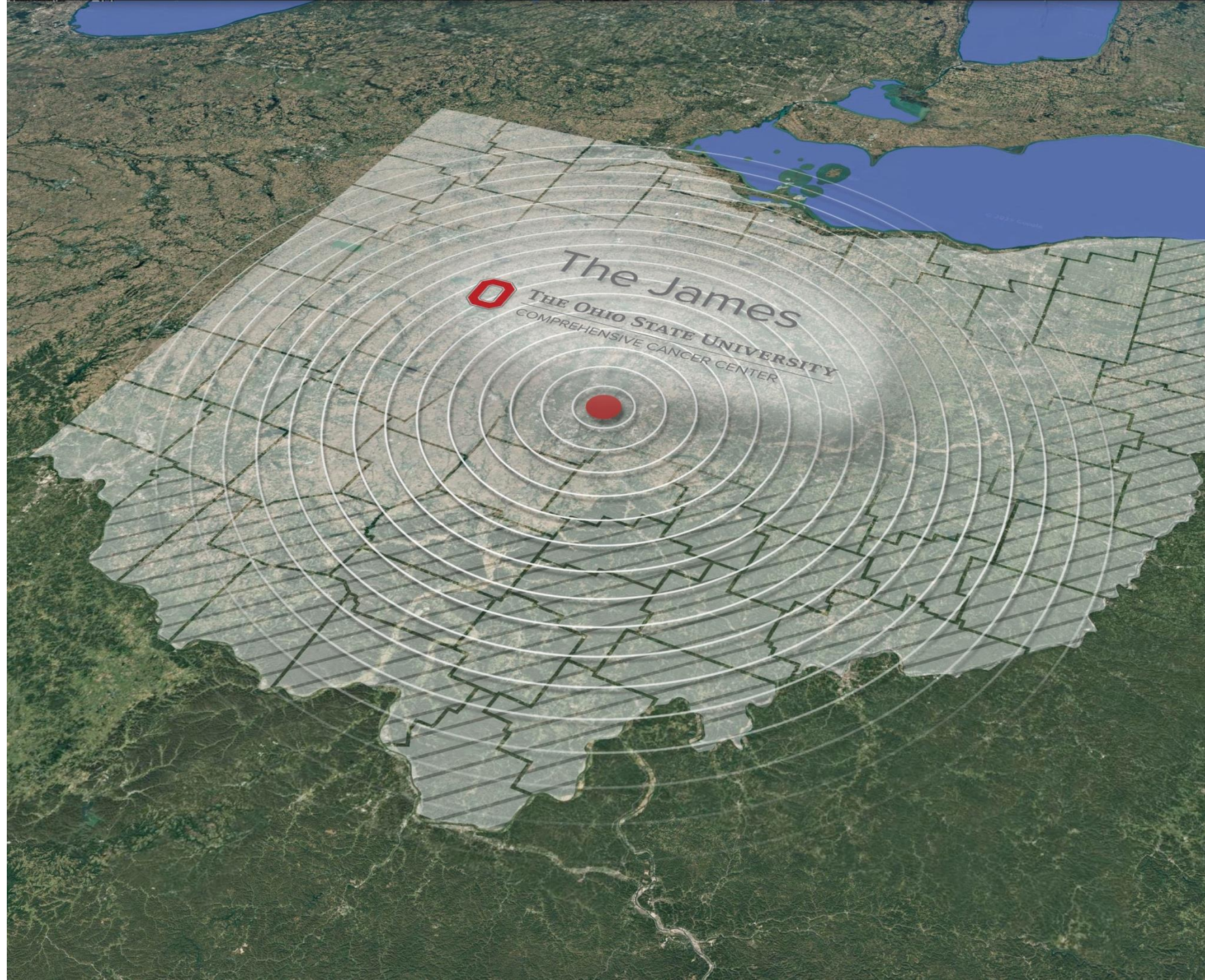
\$101M Annual direct
grant funding

66 Faculty recruits
(members)

\$25M+ Annual
Pelotonia
support

What is *special* about this Cancer Center?

1. Largest dedicated cancer hospital in a U.S. academic medical center
2. Campus co-location of The Ohio State University colleges
3. NCI designated Comprehensive Cancer Center 49 years with an exceptional rating the last 4 cycles
4. Remarkable institutional commitment
5. Robust community support throughout our catchment area



324 members in 12 of 15 colleges and Nationwide Children's Hospital



NATIONWIDE CHILDREN'S HOSPITAL



FOOD, AGRICULTURAL, & ENVIRONMENTAL SCIENCES



ENGINEERING



SOCIAL WORK



VETERINARY MEDICINE +



ARTS & SCIENCES



EDUCATION & HUMAN ECOLOGY



PUBLIC HEALTH +



LAW



DENTISTRY +



PHARMACY +

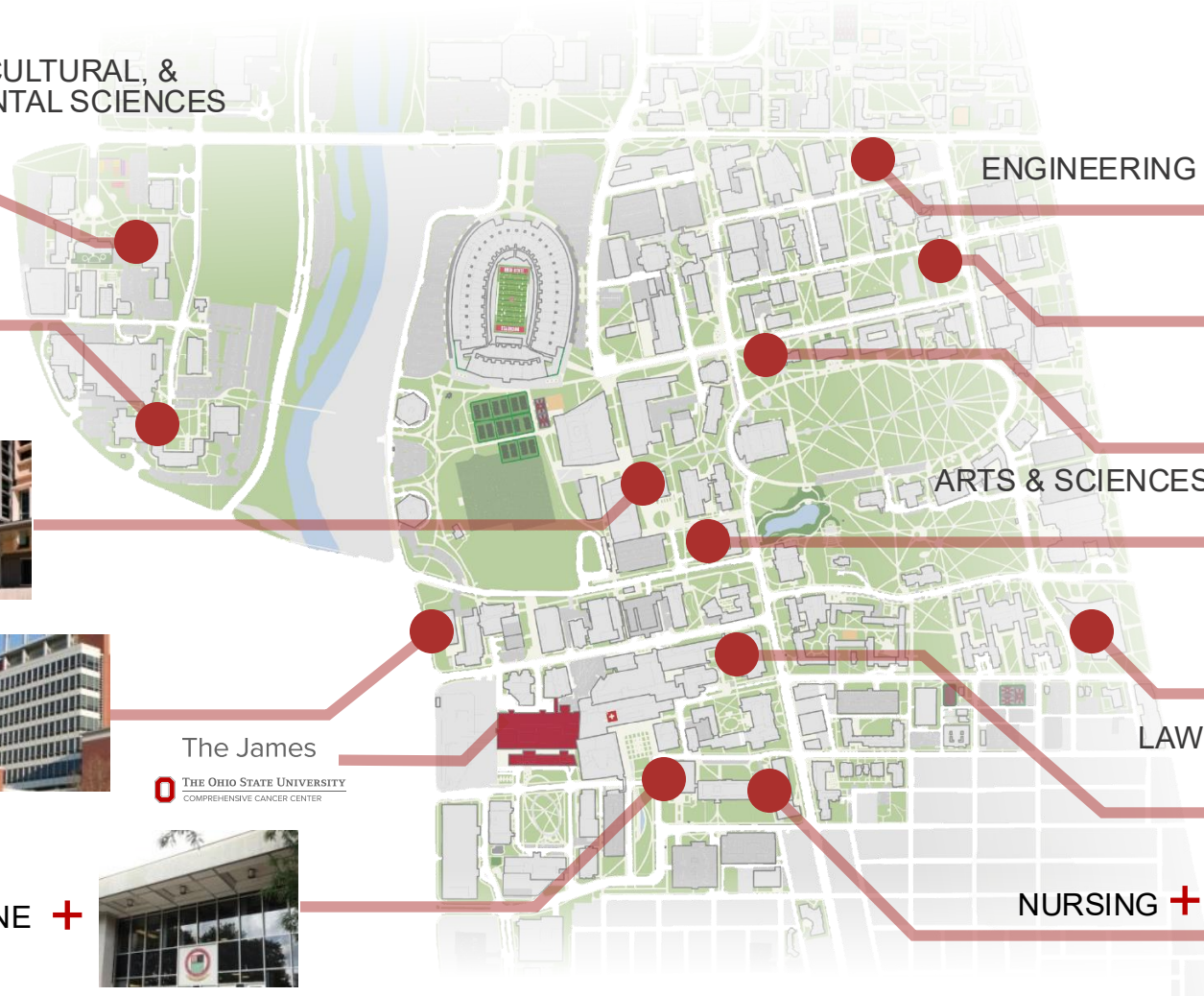


The James
THE OHIO STATE UNIVERSITY
COMPREHENSIVE CANCER CENTER



MEDICINE +

NURSING +



+ Health Sciences Colleges

The Ohio State University Comprehensive Cancer Center (OSUCCC – James) CRTEC



David Gosky, MS, MBA
Executive Director,
OSUCCC



Amanda Toland, PhD, FACMG
Associate Director,
CRTEC (CAMELOT)



Bethany Mundy Bosse, PhD
Assistant Director,
Mentoring



Rosa Lapalombella, PhD
Assistant Director,
Pelotonia
Scholarships



Christopher Coss, PhD
Assistant Director,
Student Pathways



Ce Shang, PhD
Assistant Director,
Career Pathways



Kellee Gauthier, MPH
Senior Director,
Training, Education and Growth



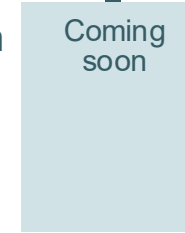
Kelly Wolfe, MBA
Senior Program
Manager,
Training Grants
& Data



Marie Gibbons
Program Manager,
Pelotonia
Scholarships



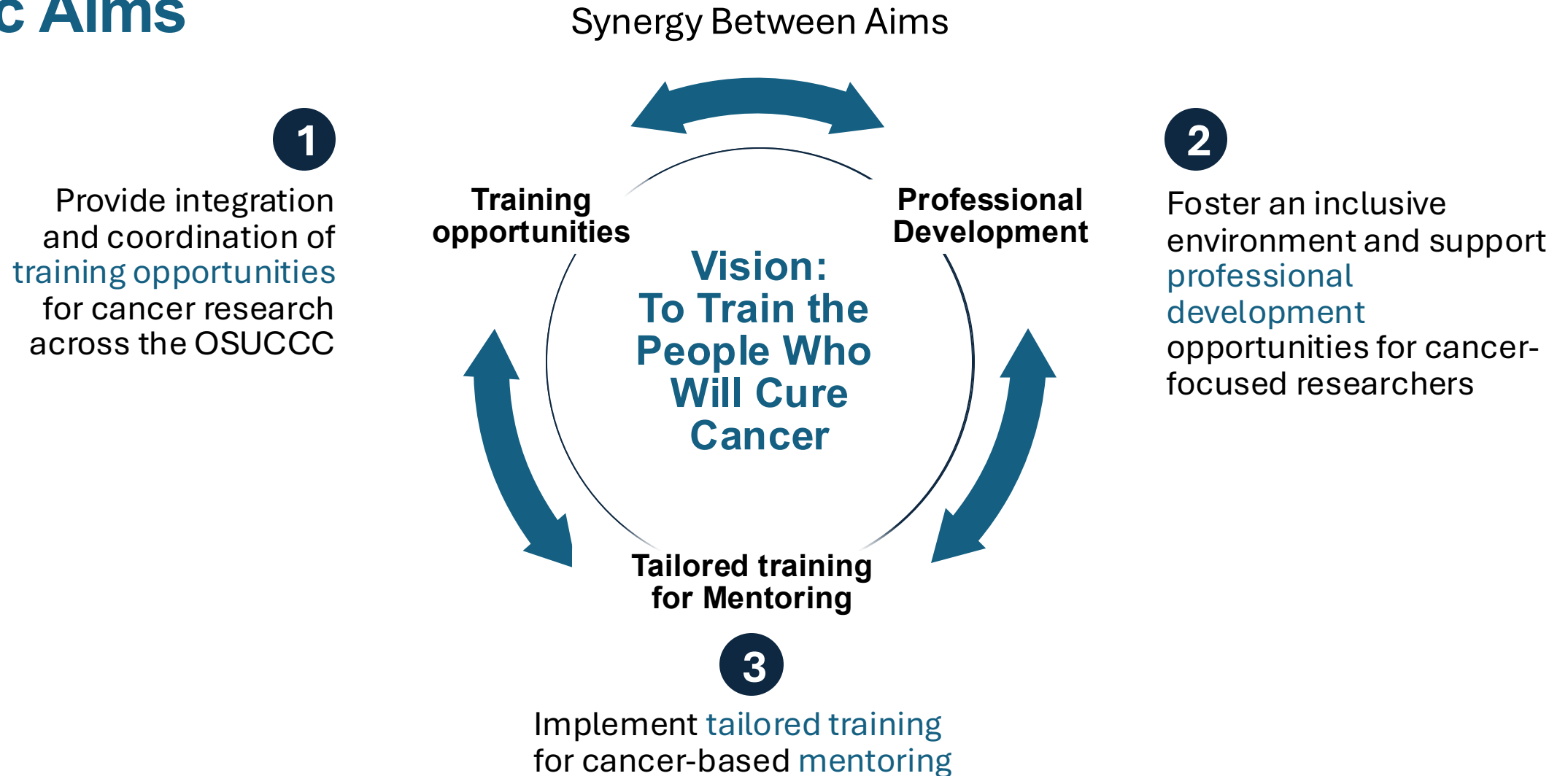
Margaret Robinson
Program Manager,
Trainee Programs



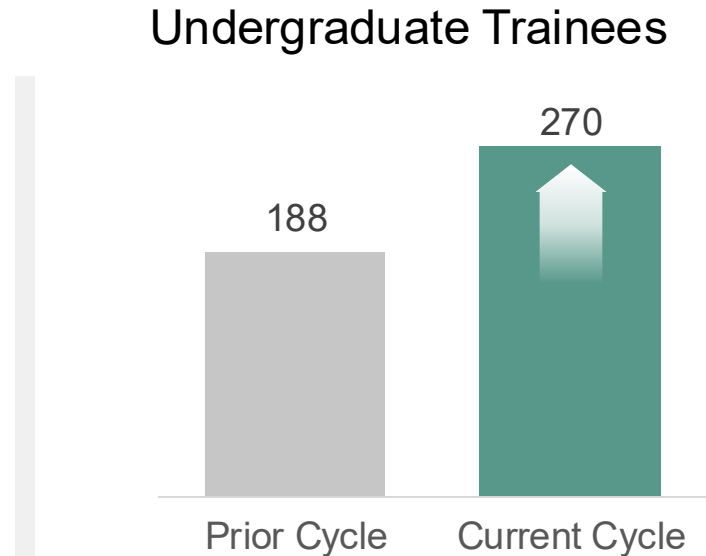
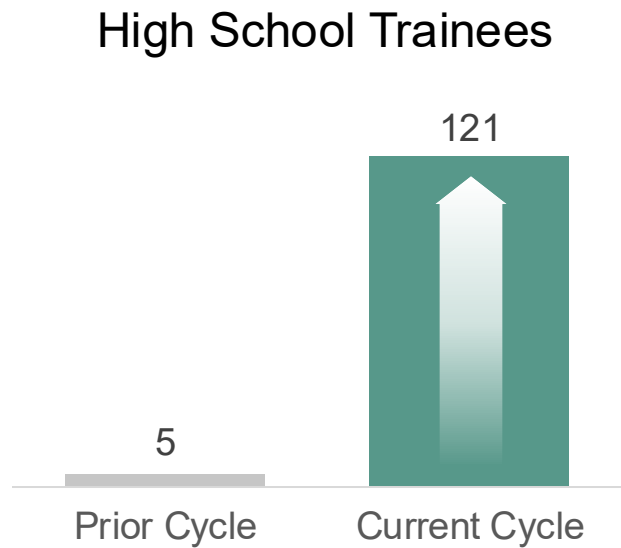
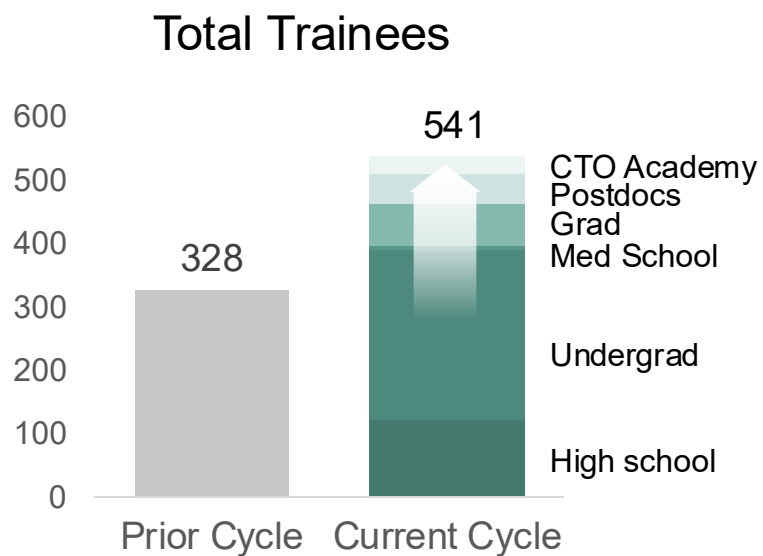
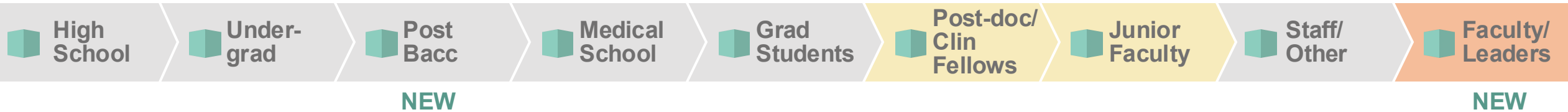
Julie O'Neill,
Program Manager,
Trainee Programs

The Ohio State University James Comprehensive Cancer Center CRTEC

Specific Aims



Accomplishments 2020-2025 Funding Cycle



198
Scholarships
Pelotonia Scholars Program

10
New
F Awards

19
New
K Awards

6*
New/Renewed
T Awards

*including current T34 and T32 pending renewal

Accessible Opportunities and Education Cancer Pathways for All

High School	Undergrad	Post Bacc	Medical School	Grad Students	Post-doc/ Clin Fellows	Junior Faculty	Staff/ Other	Faculty/ Leaders
OSUCCC Grand Rounds, Program and Annual Meetings, Workshops								
PELTONIA Scholarship Program					IRP			
CREATES-HS	CREATES-Undergrad (4 colleges)	ACS DICR Post-bac	CUPID	IRP URM Supplement		OSUCCC Young PIs	Shared Resource Practicum	ASH/ASCO Review
WEST STEM	Kenyon	Discovery Prep Program	ASH/ASCO	T32 Pre and Post		K12 Grant	CTO Training Academy	Mentor Recognition
ACS-SHE	CCHE-HBCU Summer			Grant writing: Video library and R Club				T32/R25 Pre/Post
OSUCCC Research Volunteers				Grant writing: K/F Club				
CaBI Coding Bootcamp	ASPIRE			Scientific Writing Workshop				
				Mock Study Section		Onboarding		Onboarding
				CCC-COM Fellowships	Shared Resource Practicum	DREAM		DREAM
				Exchange Program		FAME		FAME
				BSGP, NGP, MCDB, I2GP OSBP	PSTP			LEAP
			Medical Scientist Training Program		CTSI			CTSI

CRTEC-led

CRTEC-supported

New Since 2020

Collaborations across campus

Session Description

A forum geared towards research administrators, who wear many hats and juggle complex projects and deadlines. Join this interactive session for an opportunity to connect with administrators and CRTEC Administrative Network (CAN) Group Leaders.

Objectives:

- We will practice a guided writing exercise, identifying our unique areas of expertise and shared experiences.
- Form at least four new connections in your field and gain practical tips for building team collaboration.



CRTEC Admin Network (CAN)

Join CAN!

Email anyone on the leadership committee to be added to our network's emails and monthly seminars.



2025-26 Seminar Topics

- Trainee Recruitment & Retention
- Tracking Trainee Successes
- Navigating CRTEC for New Staff
- DEIA Policy Pivots
- CRTEC Career Pathways
- CCSG & Renewal Insights

CAN Leadership Committee



Nishtha Agarwal

nishthaagarwal@mednet.ucla.edu

Jonsson Comprehensive Cancer Center, UCLA



Andrea Brocato

ajbrocat@fredhutch.org

Fred Hutchinson Cancer Center, Fred Hutch/University of Washington/Seattle Children's Cancer Consortium



Jennifer Seuferer

jennifer.seuferer@ucsf.edu

Helen Diller Family Comprehensive Cancer Center, UCSF



Rachel Sorensen

r.sorensen@wustl.edu

Alvin J. Siteman Cancer Center, Washington University

CRTEC Admin Network (CAN)

Purpose & Focus Areas:

- Foster **collaboration and communication** among CRTEC administrators
- Share **best practices** in trainee tracking, evaluation, outreach, and program operations
- Support **professional development** and leadership growth among administrative staff
- Align efforts with **ACCA's mission** to advance excellence in cancer center administration

Over 200 Members Participate in:

- **Monthly meetings** featuring center-led presentations and shared discussions
- **Annual Surveys** to collect member input on priority topics, training needs, and areas of shared interest
- **Ad hoc sessions** with guest speakers from **NCI** and **NIH** leadership
- **Resource sharing**, peer learning, and cross-center collaboration opportunities

Thank you!

Questions/Comments



Olga Katsovskiy

okatsovskiy@bwh.harvard.edu

Neurology Department, Brigham and Women's Hospital